

GRP Kiosks for Pocket Sub-Stations

GRP drop over kiosks are of modular construction and can be assembled on site or transported & fixed in fully assembled condition. The kiosks can be made to suit customer requirements & specifications and doors can be provided either on width sides or on depth sides.



Standard Features

- Stainless steel hinges
- Door windstraps provided
- Galvanised steel hardware
- Free standing, high impact & temperature resistant
- Wall thickness 6 mm & at points of stress 9 mm
- Latch on door provided to secure in closed position
- Fire retardant, self extinguishing to BS 476: Part 7 : 1997 class 2 / DIN 4102 class B2
- Aluminium aldrop for padlock & aluminium door handles provided
- Panels are stiffened with GRP cross members
- Lifting hooks
- External finish : Plain semi glass light grey gelcoat finish to RAL 7035

Options

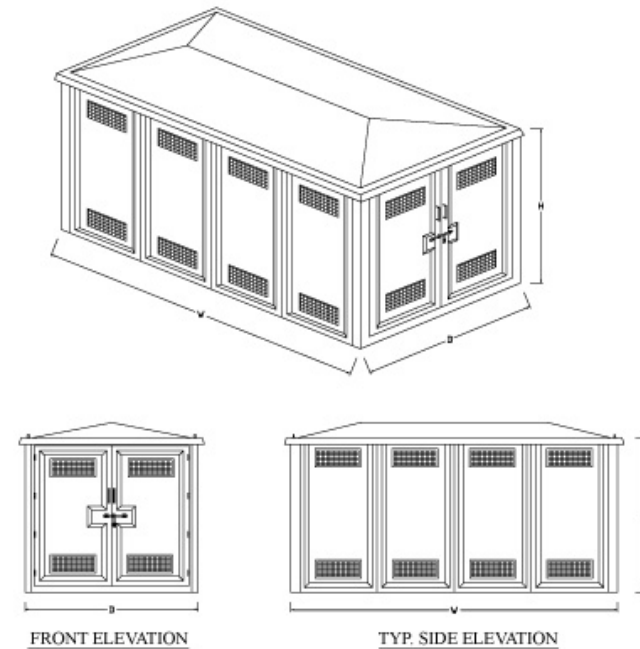
- Stainless steel hardware & accessories
- Higher wall thickness & fire rating
- Brackets for fixing kiosks from outside
- Ventilation arrangement to customer's requirement and specifications

Standard Colours

- ◆ Light Grey - RAL 7035
- ◇ Pure White - RAL 9010
- ◆ Light Ivory - RAL 1015
- ◆ Grass Green - RAL 6010
- Other colours on special request

GRP Kiosks for Pocket Sub-Stations

General Drawing



Sizes Available

All dimensions in mm

SL. NO.	PRODUCT REFERENCE	INTERNAL SIZE		
		HEIGHT H	WIDTH W	DEPTH D
1	K 253221	2500	3200	2100
2	K 253327	2500	3300	2700
3	K 223724	2200	3700	2400
4	K 254021	2500	4000	2100
5	K 304142	3000	4100	4200
6	K 305556	3000	5500	5600
7	K 255227	2500	5200	2700

For any other size please call for quotation.
Design details from those shown can be changed without prior notice.