

Polyester Enclosure Single Door IP-65

Polyester Enclosure Single Door IP-65



Standard Features

- IP rating 65
- Lift off type brass hinges
- Long life EPDM gasket
- Full rain canopy provided
- Additional flat gasket on door
- High impact & temperature resistant
- Studs for fixing mounting plate provided
- Wall thickness 4 mm and at points of stress 6 mm
- Fire retardant, self extinguishing to BS 476: Part 7 : 1997 class 2 / DIN 4102 class B2
- External finish : Plain semi gloss light grey gelcoat finish to RAL 7035
- All hardware galvanised steel or of non-corrosive material
- Wing type latch - 3 nos. or 4 nos.
- Wing type lock with keys - 2 nos.

Options

- Lifting facility
- Padlocking facility
- Stainless steel hardware
- Higher wall thickness and fire rating

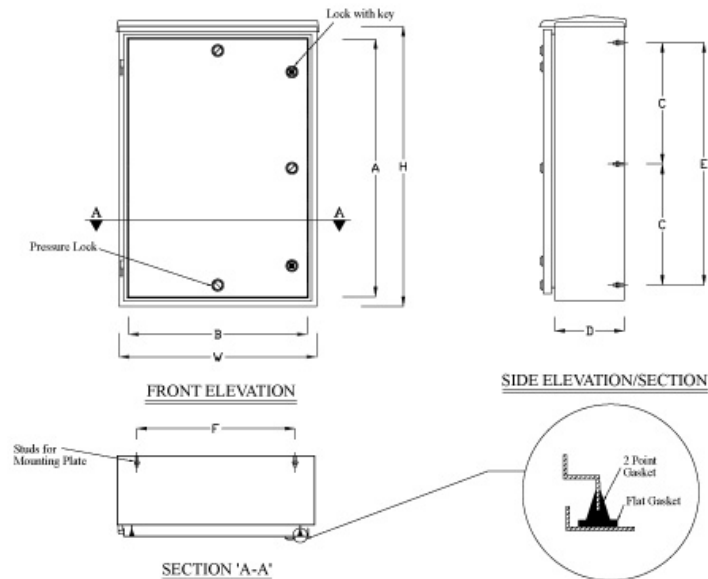
Accessories

- Pedestal
- Mounting plate
- Gland Plate
- Drawing pocket
- Door stays
- Transparent window

Standard Colours

- ◆ Light Grey - RAL 7035
- ◇ Pure White - RAL 9010
- ◆ Light Ivory - RAL 1015
- ◆ Grass Green - RAL 6010
- ◆ Flame Red - RAL 3000
- Other colours on special request

General Drawing



* Number of pressure locks depends upon the size of the enclosure

Sizes Available

All dimensions in mm

SL. NO.	PRODUCT REFERENCE	INTERNAL SIZE			CLEAR OPENING		C/C OF STUDS			CUT OUT FOR GLAND PLATE
		HEIGHT H	WIDTH W	DEPTH D	A	B	C	E	F	
1	S 08052i	850	550	280	750	460	---	650	450	400 X 120
2	S 08062i	850	600	200	750	500	---	650	480	400 X 80
3	S 10062i	1000	600	250	900	500	---	800	480	400 X 120
4	S 10083i	1000	800	300	900	690	---	800	680	600 X 150
5	S 12083i	1200	850	300	1100	740	500	---	680	600 X 150
6	S 14083i	1400	800	300	1280	690	590	---	680	600 X 150

For any other size please call for quotation.
Design details from those shown can be changed without prior notice.